

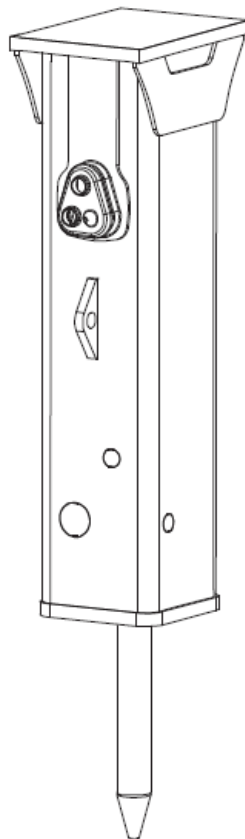
# EC 50T

---

## Spare parts list

### Hydraulic breakers

EC 50T s/n BES140218 –



# General information

This spare parts list applies to the following:

| Part number | Description       |
|-------------|-------------------|
| 8460050097  | EC 50T            |
| 8460050098  | EC 50T No sticker |
| 8460050136  | EC 50T HATCON     |

Use only authorized parts. Any damage or malfunction caused by the use of unauthorized parts is not covered by Warranty or Product Liability. Any unauthorized use or copying of the contents or any part thereof is prohibited. This applies in particular to trademarks, model denominations, part numbers, and drawings.

## Instructions for use

This spare parts list contains no safety regulations and is merely intended to assist in the ordering of spare parts.

For information about operating, servicing, or repairing, the relevant Safety and operating instructions must be consulted at all costs.

Please observe the safety instructions listed in the relevant Safety and operating instructions!

**Service, repair and wear part kits**

|           |   |
|-----------|---|
| Label kit | 1 |
| Seal kit  | 3 |

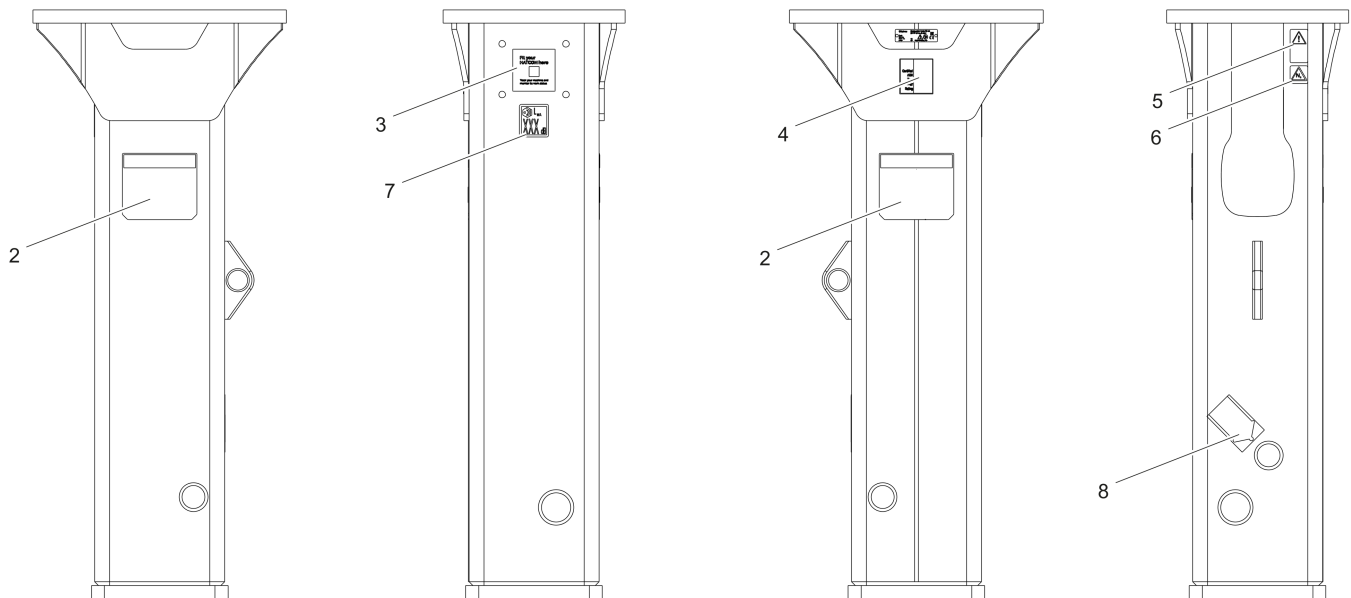
**Mechanical**

|  |    |
|--|----|
| Hydraulic breaker (Square box valid from BES097279)  | 5  |
| HATCON (Horizontal)                                  | 7  |
| Percussion unit (Generation 2, valid from BES094536) | 9  |
| Tightening torque                                    | 11 |
| Dimensions   | 13 |
| Assembly instruction                                 | 14 |

**Options/accessories**

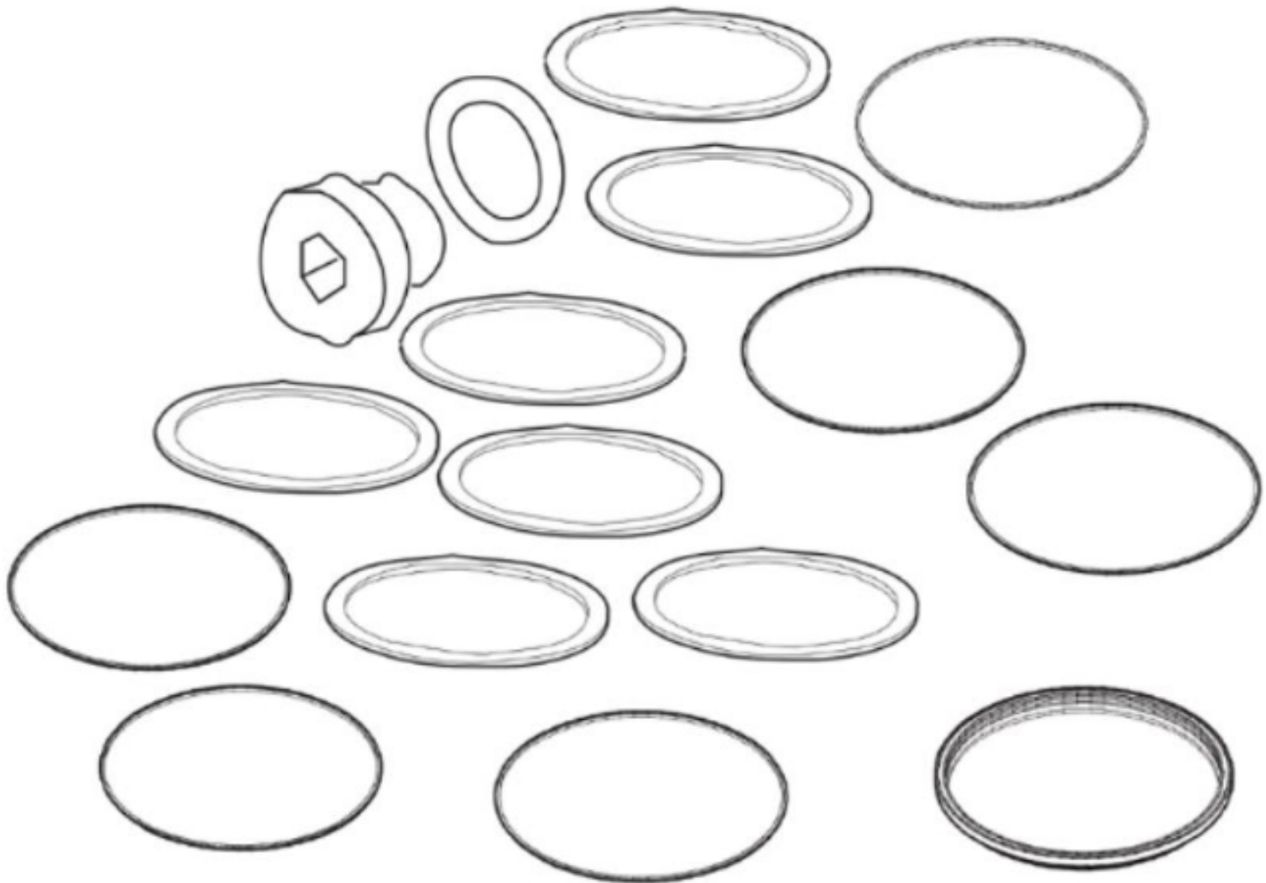
|                    |    |
|--------------------|----|
| Retrofit           | 16 |
| Optional equipment | 19 |
| Working tools      | 21 |
| Hydraulic hose     | 23 |

## Service, repair and wear part kits Label kit



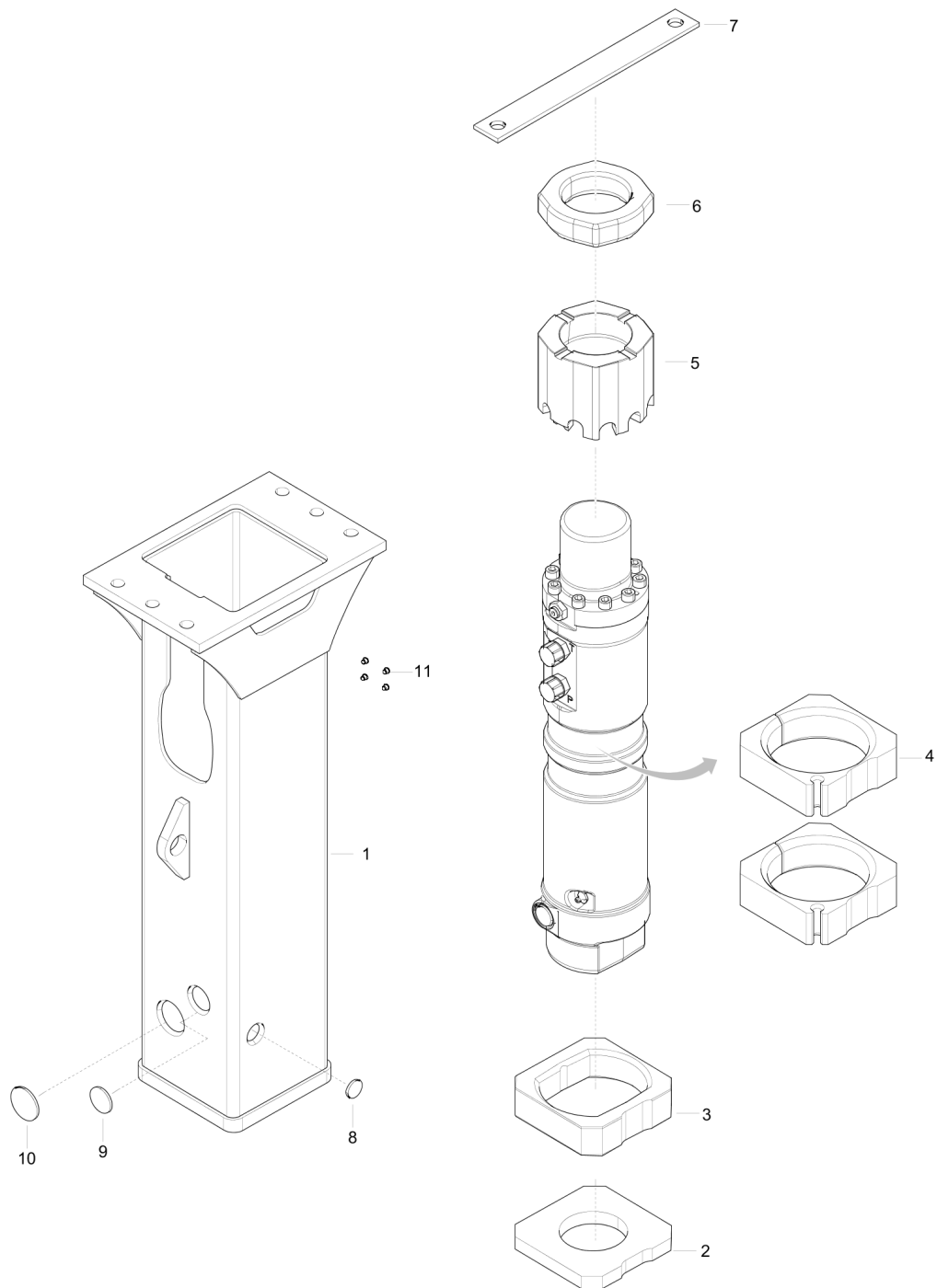
| Item | Part No.   | Name                       | Qty | L |
|------|------------|----------------------------|-----|---|
| 1    | 3315387100 | Label kit                  | 1   |   |
| 2    | -          | LABEL                      | 2   |   |
| 3    | -          | HATCON Label               | 1   |   |
| 4    | -          | SAFETY LABEL               | 1   |   |
| 5    | 3315262900 | Safety label               | 1   |   |
| 6    | 3315263000 | Safety label               | 1   |   |
| 7    | -          | SOUND LABEL                | 1   |   |
| 8    | 3360995411 | Label - Lubricating symbol | 1   |   |

Service, repair and wear part kits Seal kit



| Item | Part No.   | Name   | Qty | L |
|------|------------|--|-----|---|
| 1    | 3361120011 | Seal kit   | 1   |   |
| -    | --         | O-ring   | 1   |   |
| -    | --         | Threaded plug  | 1   |   |
| -    | --         | Seal, 47 x 5.33 mm, 1.85 x 0.21 in.                        | 1   |   |
| -    | --         | Seal   | 2   |   |
| -    | --         | O-ring, 56.52 x 5.33 mm, 2.23 x 0.21 in. (70 shore)        | 3   |   |
| -    | --         | O-ring, 69.22 x 5.33 mm , 2.73 x 0.21 in. (90 shore)       | 1   |   |
| -    | --         | Back-up ring, 70.31 x 4.65 mm , 2.77 x 0.18 in. (90 shore) | 1   |   |
| -    | --         | O-ring, 94.62 x 5.33 mm , 3.72 x 0.21 in. (90 shore)       | 1   |   |
| -    | --         | Back-up ring, 94.83 x 4.65 mm , 3.73 x 0.18 in. (90 shore) | 1   |   |
| -    | --         | Seal, Ø 104 mm, Ø 4.09 in                                  | 1   |   |
| -    | --         | O-ring, 88.25 x 5.33 mm , 3.47 x 0.21 in. (90 shore)       | 1   |   |
| -    | --         | Seal, 50 x 65.5 x 6 mm, 1.97 x 2.58 x 0.24 in.             | 1   |   |
| -    | --         | Seal   | 1   |   |
| -    | --         | Retainer   | 1   |   |
| -    | --         | O-ring, 19.18 x 2.46 mm , 0.76 x 0.10 in. (70 shore)       | 2   |   |

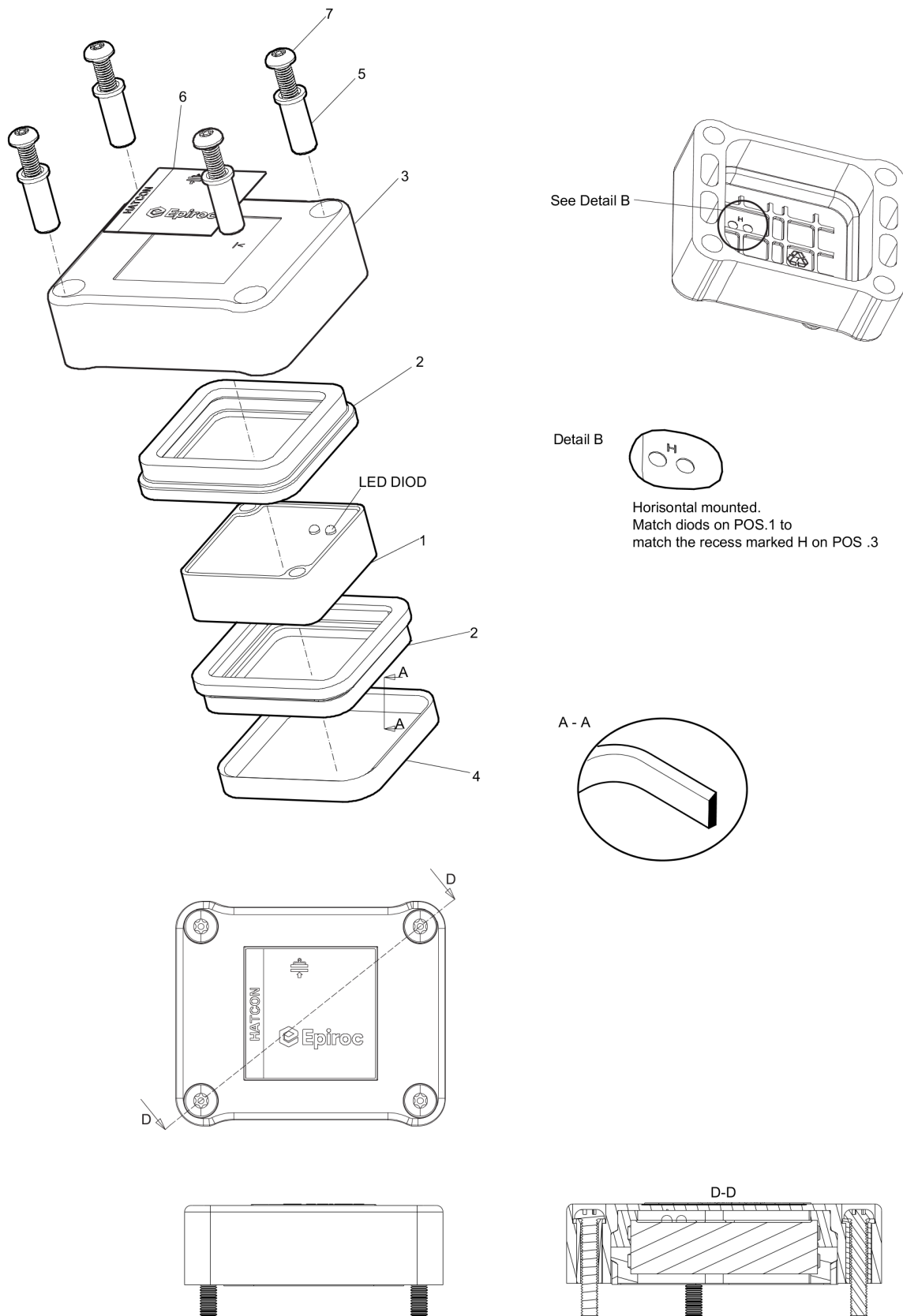
## Mechanical Hydraulic breaker (Square box valid from BES097279)





| Item | Part No.   | Name                   | Qty | L |
|------|------------|------------------------|-----|---|
| 1    | 3362120002 | Breaker box            | 1   |   |
| 2    | 3362420001 | Shock absorber         | 1   |   |
| 3    | 3315288620 | Guide plate            | 1   |   |
| 4    | 3362420003 | Guide plate            | 2   |   |
| 5    | 3315431700 | Spacer                 | 1   |   |
| 6    | 3315431600 | Shock absorber         | 1   |   |
| 7    | 3362491017 | Retainer               | 1   |   |
| 8    | 3362491015 | Plug                   | 3   |   |
| 9    | 3362491014 | Plug                   | 1   |   |
| 10   | 3362491013 | Plug                   | 1   |   |
| 11   | 3315439145 | Protective plug HATCON | 4   |   |

## Mechanical HATCON (Horizontal)

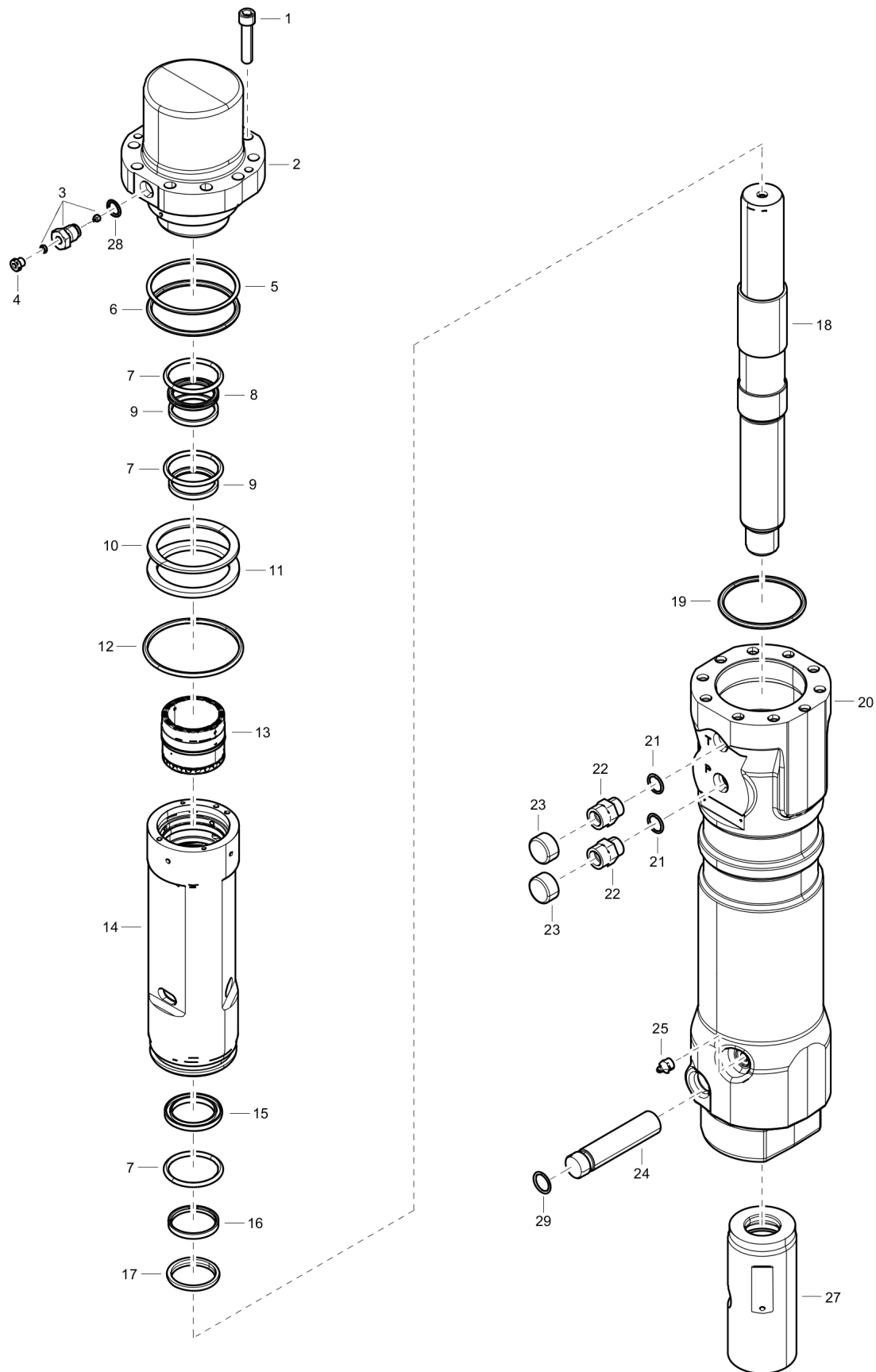


Refer to the DocMine web page for most up-to-date information. The printed information might be outdated.

Fri Mar 19 13:21:37 UTC 2021

| Item | Part No.   | Name                   | Qty | L |
|------|------------|------------------------|-----|---|
| 1    |            | Tracking module HATCON | 1   |   |
| 2    | 3315439130 | Damper HATCON          | 2   |   |
| 3    | 3315439110 | Housing type 1 HATCON  | 1   |   |
| 4    | 3315439140 | Lock ring HATCON       | 1   |   |
| 5    | 3315439120 | Sleeve HATCON          | 4   |   |
| 6    | 3315439100 | Product label HATCON   | 1   |   |
| 7    | 3315442610 | Screw HATCON           | 4   |   |

## Mechanical Percussion unit (Generation 2, valid from BES094536)



Refer to the DocMine web page for most up-to-date information. The printed information might be outdated.

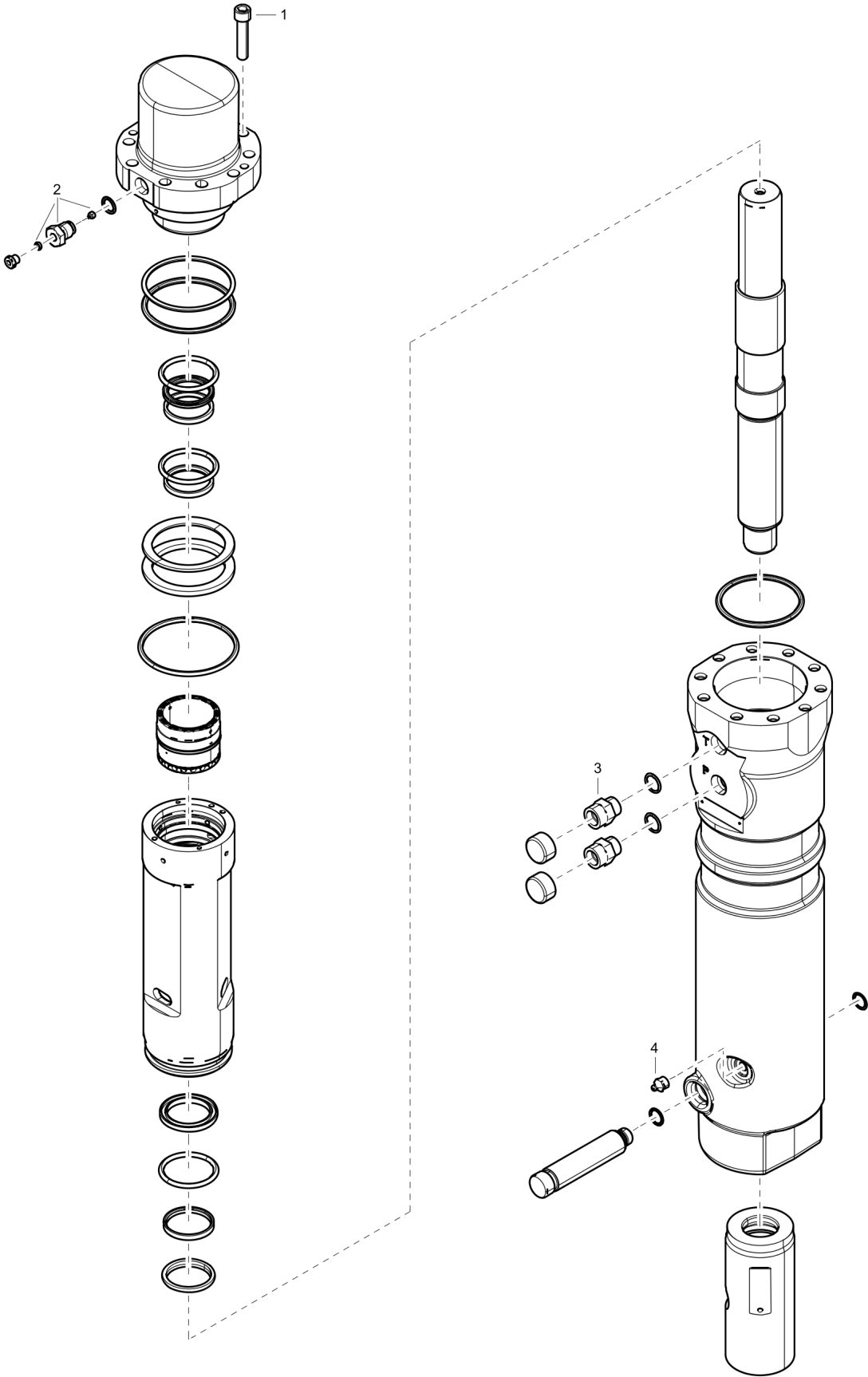
Fri Mar 19 13:21:38 UTC 2021

| Item | Part No.   | Name                   | Qty | L |
|------|------------|------------------------|-----|---|
| 1    | 3315431100 | MC6S M12x55 8.8 g627   | 10  |   |
| 2    | 3315429600 | Backhead               | 1   |   |
| 3    | 3363087286 | Filling valve complete | 1   |   |
| 4    | 3360478426 | Threaded plug          | 1   |   |
| 28   | 0663925100 | O-ring, 15.08x2.62     | 1   |   |
| 5    | 0661150126 | Backup ring, ø92,66    | 1   | A |
| 6    | 3361192020 | O-ring, 94.62x5.33     | 1   |   |
| 7    | 3361192044 | O-ring, 56.25x5.33     | 3   |   |
| 8    | 3361192042 | Quadring               | 1   |   |
| 9    | 3361192043 | Stepseal               | 2   |   |
| 10   | 3361120004 | Plate spring           | 1   |   |
| 11   | 3361120005 | Spacer                 | 1   |   |
| 12   | 3315296610 | Sealing                | 1   |   |
| 13   | 3361120106 | Control valve          | 1   |   |
| 14   | 3361120002 | Cylinder body          | 1   |   |
| 15   | 3361192049 | Sealing                | 1   |   |
| 16   | 3361192050 | Stepseal               | 1   |   |
| 17   | 3361192051 | Wiper                  | 1   |   |
| 18   | 3315332630 | Piston                 | 1   |   |
| 19   | 3361192047 | O-ring, 88.25x5.33     | 1   |   |
| 20   | 3315429705 | Cylinder housing       | 1   |   |
| 21   | 3361192067 | O-ring                 | 2   |   |
| 22   | 3361031476 | Nipple                 | 2   |   |
| 23   | 3361353486 | Cap                    | 2   |   |
| 24   | 3315429811 | Retainer               | 1   |   |
| 25   | 0544215300 | GREASE NIPPLE          | 1   |   |
| 27   | 3361120009 | Wear bushing           | 1   |   |
| 29   | 0663212111 | O-RING 22X3,5          | 1   |   |

Comments for Page: Percussion unit (Generation 2, valid from BES094536)

A | Replaces 3361192021 , valid from BES102089

Mechanical Tightening torque



| Item | Part No. | Name   | Qty | L |
|------|----------|--|-----|---|
| 1    | -        | Bolt, in production with new - 65 Nm                               | -   | A |
| 1    | -        | Bolt, in service with molycote - 78 Nm, see "Assembly instruction" | -   |   |
| 2    | -        | Filling valve- 130 Nm  | -   |   |
| 3    | -        | Nipple- 90 Nm  | -   |   |
| 4    | -        | Lubrication nipple- 20 Nm  | -   |   |

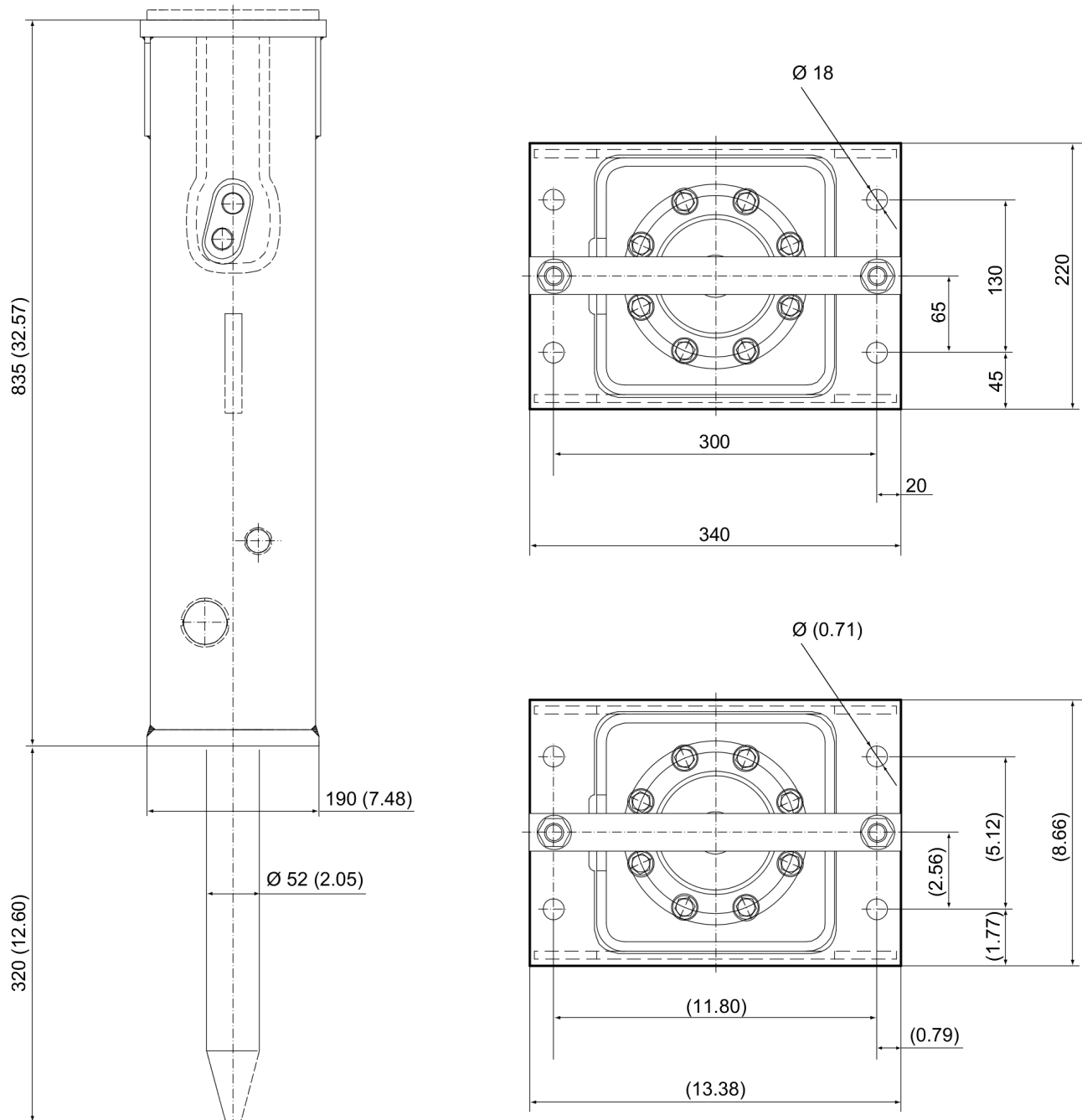
Comments for Page: Tightening torque

(L)OCAL REMARKS

A |

Pretighten the bolts to 25 Nm, proceeding in a crosswise fashion,  
then tighten each bolt through 30° in a crosswise fashion,  
finally tighten each bolt again through 30° in a crosswise fashion.

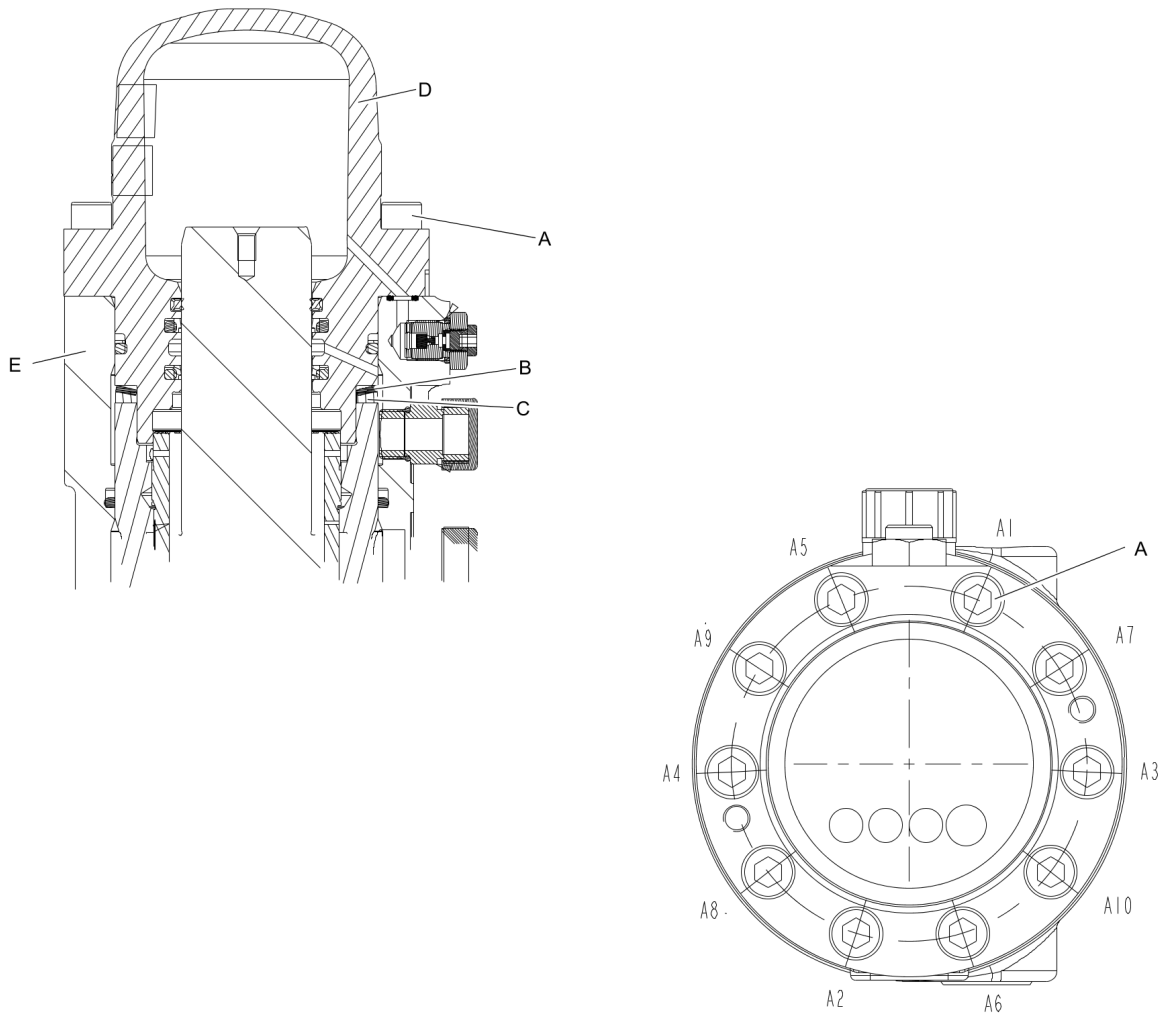
## Mechanical Dimensions





This page intentionally left blank

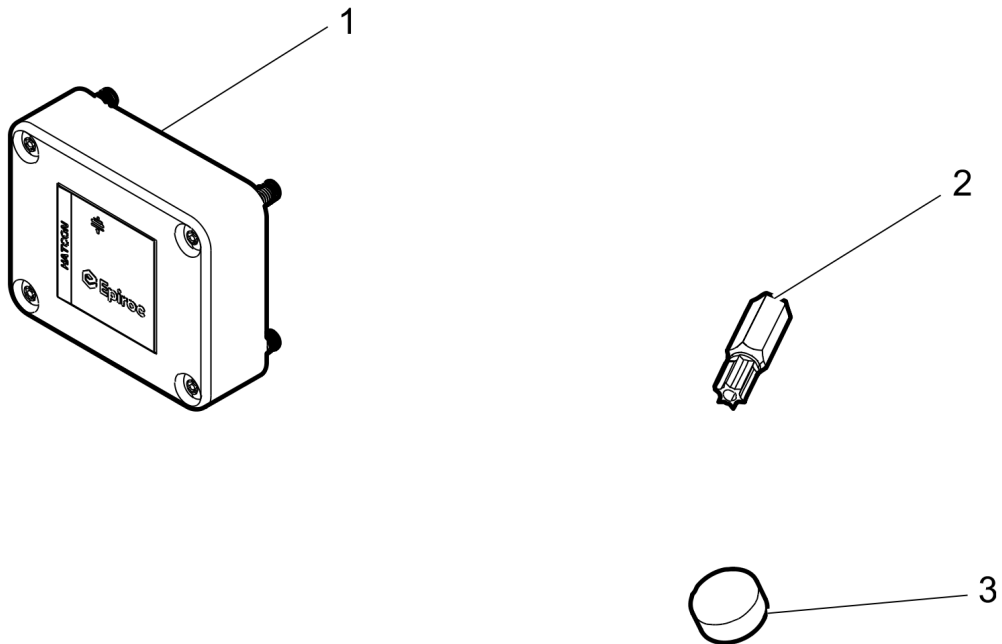
## Mechanical Assembly instruction



1. Make sure the spring plate (B) and spacer (C) are centered before mounting the back head (D).
2. Press the back head (D) down on the spring plate (B) and spacer (C).
3. Grease the screws (A) with Molykote® 1000 (Molykote is a registered trademark of Dow Corning Corporation), and manually fit them on the back head (D)
4. Torque the screws (A) in the order from A1 to A10 in one step.

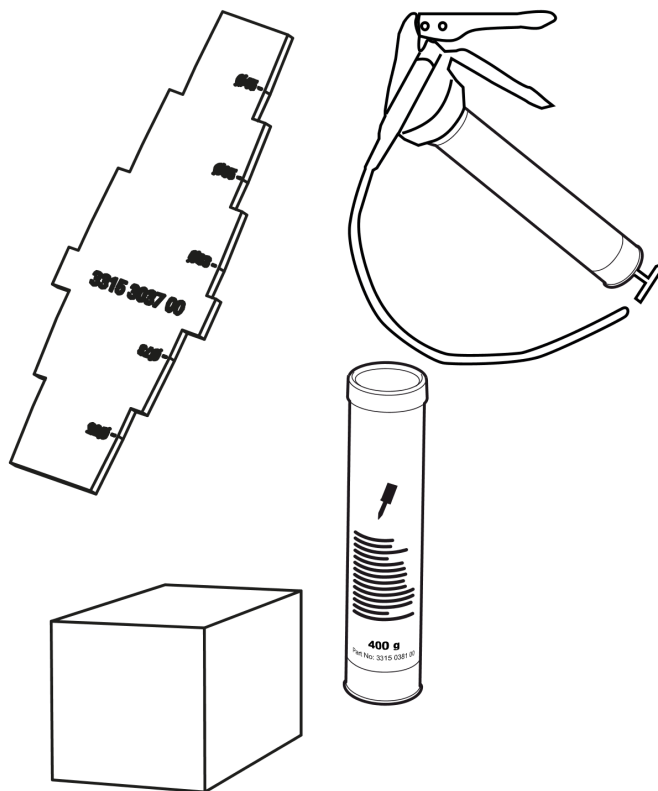
This page intentionally left blank

## Options/accessories Retrofit



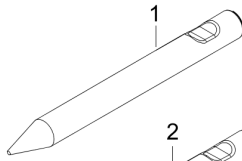
| Item | Part No.   | Name                | Qty | L |
|------|------------|---------------------|-----|---|
| 1    | 3315442506 | Retrofit kit HATCON | 1   |   |
| 2    | 3315439105 | Security bit HATCON | 1   |   |
| 3    | 3315439106 | Magnet HATCON       | 1   |   |

## Options/accessories Optional equipment

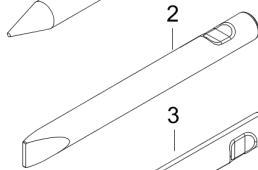


| Item | Part No.   | Name   | Qty | L |
|------|------------|--|-----|---|
| 1    | 3363094913 | Chisel paste cartridge for grease gun, 12 x 400 g (0.88 lbs)                     | 1   |   |
| 2    | 0909107100 | LUBRICAT.GUN   | 1   |   |
| 3    | 3315303700 | Test gauge wear bush   | 1   |   |
| 4    | 3363089844 | Maintenance and charging box with nitrogen cylinder, 2 l, 0.43 gal (0.53 US gal) | 1   |   |
| 5    | 3363094940 | Maintenance and charging box without nitrogen cylinder                           | 1   |   |
| 6    | 3362269303 | Base plate with through borings  | 1   |   |
| 7    | 3363106507 | Bolt kit   | 1   |   |

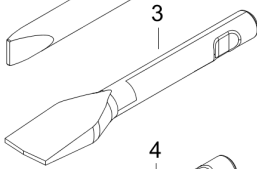
## Options/accessories Working tools



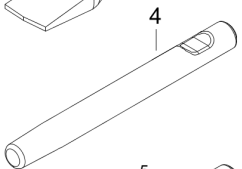
L=320 mm, Lt=530 mm, Wt=7.9 kg  
L=12.6 inch, Lt=20.87 inch, Wt=17.4 lb



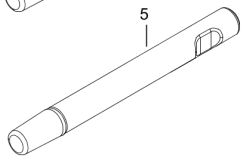
W=52 mm, L=320 mm, Lt=530 mm, Wt=8.3 kg  
W=2.05 inch, L=12.6 inch, Lt=20.87 inch, Wt=18.3 lb



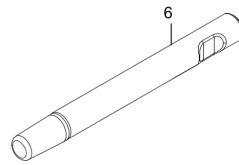
W=120 mm, L=370 mm, Lt=500 mm, Wt=9.7 kg  
W=4.72 inch, L=14.57 inch, Lt=19.7 inch, Wt=21.4 lb



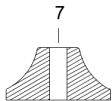
L=320 mm, Lt=530 mm, Wt=8.6 kg  
L=12.60 inch, Lt=20.87 inch, Wt=19.0 lb



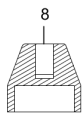
LT=340 mm, Wt=4,8 kg  
LT=13.4 inch, Wt=10.6 lb



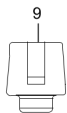
LT=490 mm, Wt=7.3kg  
LT=19.3 inch, Wt=16.1 lb



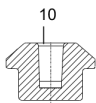
W= 200 mm, Wt=15 kg  
W= 7.87 inch, Wt=33.1 lb



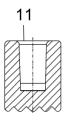
W=100 mm, Wt=8.5 kg  
W=3.94 inch, Wt=18.7 lb



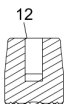
W=50 mm, Wt=3.3 kg  
W=1.97 inch, Wt=7.3 lb



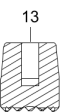
W=100 mm, Wt=5.4 kg  
W=3.94 inch, Wt=11.9 lb



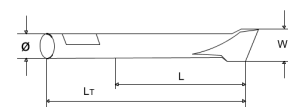
W=80 mm, Wt=3.1 kg  
W=3.15 inch, Wt=6.8 lb



W=80 mm, Wt=4.3 kg  
W=3.15 inch, Wt=9.5 lb



W=80 mm, Wt=5.2 kg  
W=3.15 inch, Wt=11.5 lb



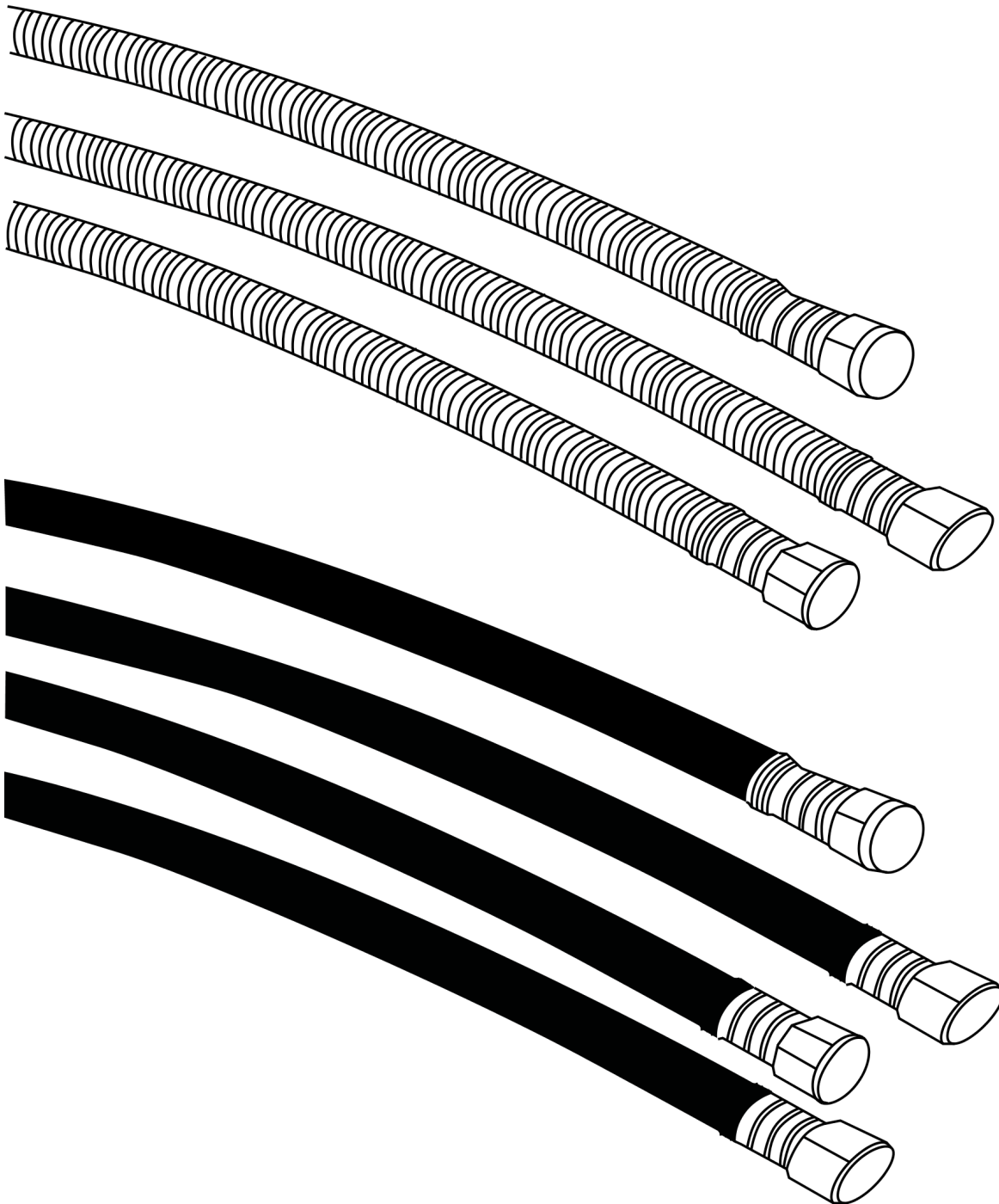
Refer to the DocMine web page for most up-to-date information. The printed information might be outdated.

Fri Mar 19 13:21:41 UTC 2021



| Item | Part No.   | Name                    | Qty | L |
|------|------------|-------------------------|-----|---|
| 1    | 3083342423 | Moil point              | 1   |   |
| 2    | 3083342425 | Chisel (cross)          | 1   |   |
| 3    | 3363120005 | Asphalt cutter (cross)  | 1   |   |
| 4    | 3083342424 | Blunt tool              | 1   |   |
| 5    | 3363125929 | Shaft                   | 1   |   |
| 6    | 3083342481 | Shaft                   | 1   |   |
| 7    | 3315370600 | Tamping pad (square)    | 1   |   |
| 8    | 3315371400 | Post driver pad (round) | 1   |   |
| 9    | 3315372100 | Pile driver pad (round) | 1   |   |
| 10   | 3315372200 | PILE DRIVER             | 1   |   |
| 11   | 3315372700 | BUSH HAMMER             | 1   |   |
| 12   | 3315372800 | Bushing pad (round)     | 1   |   |
| 13   | 3315372900 | BUSH HAMMER             | 1   |   |

## Options/accessories Hydraulic hose



| Item      | Part No.   | Name  | Qty | L |
|-----------|------------|---|-----|---|
| Not Shown | -          | Standard connection hoses   | 1   |   |
| -         | 3363115423 | Hose, both ends 18 L(M26x1.5) length 1750 mm                                    | 1   |   |
| -         | 3363491002 | Hose, both ends 18 L(M26x1.5) length 1500 mm                                    | 1   |   |
| -         | 3363101424 | Hydraulic hose, I.D. 16 mm (0.63") 18 L (M26 x 1.5), length 2000 mm (78.74 in.) | 1   |   |
| -         | 3363115425 | Hose, both ends 18 L(M26x1.5) length 2400 mm                                    | 1   |   |
| Not Shown | -          | Heavy duty connction hoses with spring protection                               | 1   |   |
| -         | 3360995717 | Hose, both ends 18 L(M26 x 1.5) length 1500 mm                                  | 1   |   |
| -         | 3363115426 | Hose, both ends 18 L(M26x1.5) length 1750 mm                                    | 1   |   |
| -         | 3362235159 | Hose, both ends 18 L(M26 x 1.5) length 2000 mm                                  | 1   |   |
| -         | 3363083313 | Hose, both ends 18 L(M26 x 1.5) length 2400 mm                                  | 1   |   |

Any unauthorized use or copying of the contents or any part thereof is prohibited.  
This applies in particular to trademarks, model denominations, part numbers, and drawings.