

# C30R-3



Weight	2650 kg
Payload	2500 kg
Width	1410 mm

The C30R-3 packs a serious punch for a compact tracked carrier. This three-sided dropdown machine offers a payload of 2,500 kg in a width of just 1,550 mm, which allows you to work in even the most-confined job sites. Mudguards protect material from affecting the hydraulic components and a joystick offers precise control.



Specifications		C30R-3
Weight	Transport weight	2575 kg
	Operating Weight	2650 kg
	Payload	2500 kg
Engine	Type	4TNV88C
	Fuel	Diesel
	Net Power	32,5 kW (at 2800 rpm)
	Displacement	2,189 l
	Max Torque	134,5 / 146,2 Nm at 1820 rpm
	Cooling	Water cooling
	Starter	12 V – 1.7 kW
	Battery	12 V – 72 Ah
	Alternator	12 V – 55 A
Transmission	Type	HST
	Hydraulic pump	2 piston pumps with variable flow
	Max pressure	350 bar
Performance	Max. traveling speed (low/high)	5.7 / 11 km/h
	Gradability	30°
	Noise level (2000/14/CE & 2005/88/CE)	L <sub>wag</sub> = 98 dBA ; L <sub>pag</sub> = 86 dBA
Dumping system	Dumping angle	58°
	Vessel dimensions (L x w x h)	1685 x 1410 x 370 mm
	Dumping mechanism	3 sides
	Dumping vessel capacity (struck / heaped)	0.88 / 1.24 m³
	Dump clearance	455 mm
Undercarriage	Track width	320 mm
	Ground clearance	265 mm
	Number of top rollers	6
	Track tensioning system	Hydraulic adjuster
	Ground pressure (unloaded / loaded)	0.27 / 0.53 kg/cm²
Capacities	Hydraulic tank	28 l
	Hydraulic circuit	38 l
	Fuel tank	58 l



**MAANKATTAVA  
HUOLTOVERKOSTO**



**SUORAAN VARASTOSTA  
VARAOSAT**

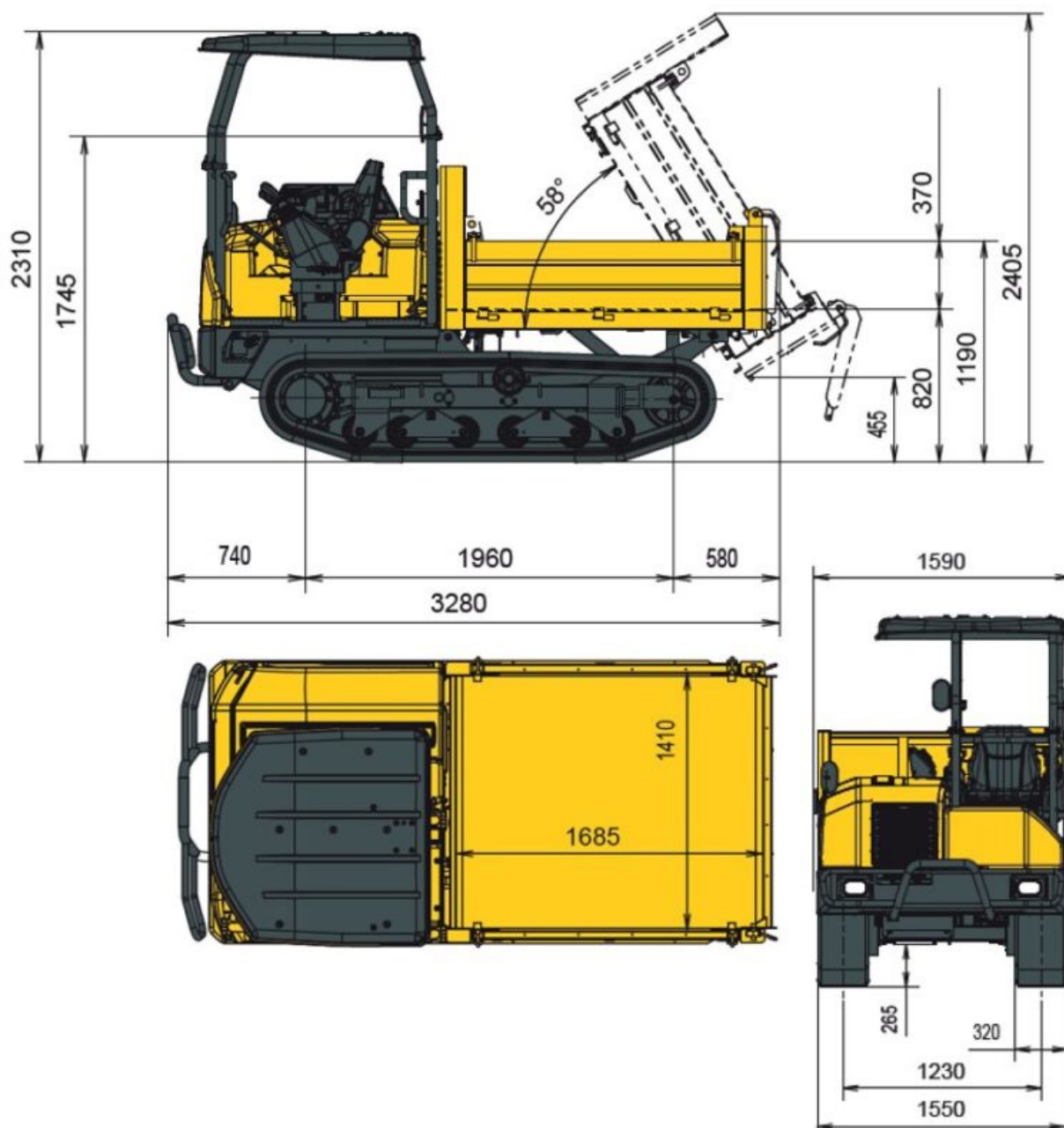


**PALVELEVA  
KENTTÄHUOLTO**



**TOIMIVA  
TEKNINEN TUKI**

# Dimensions



**MAANKATTAVA  
HUOLTOVERKOSTO**



**SUORAAN VARASTOSTA  
VARAOSAT**



**PALVELEVA  
KENTTÄHUOLTO**



**TOIMIVA  
TEKNINEN TUKI**

# Features



## COMPACTNESS

The C30R-3 isn't just compact – it's versatile. It can spin-turn 360°, so it's perfect for even the tightest of job sites. But how compact is it? The C30R-3 is just 1.5 metres wide and 3.28 metres long. These features make the machine ultra-efficient, while driving up your productivity. Despite these small dimensions, our carrier offers a payload of 2,500 kg, so you get more done, faster.



## DUMPING

Choose which side you want to dump from: rear or sides. This means you can safely dump into trenches without using much space. There's a remarkable dumping angle of 58°, so first-time safe dumping speeds up your site work. Ground clearance of 455 mm also ensures fast dumping. A mudguard prevents material from falling from the wagon and damaging hydraulic components or getting into the operator area.



## UNIQUE UNDERCARRIAGE

A unique, robust undercarriage ensures a smooth ride while extending its service life and protecting your investment. Track rollers in pairs absorb obstacles and make for an impressive all-terrain carrier. We've further improved traction force and stability by increasing the diameter of the sprocket and the length of the tracks. Mass is distributed through 24 rollers, preserving the tracks and giving the machine excellent ground pressure so it can work in the boggiest of conditions.



## UNIQUE TRANSMISSION CONCEPT

Stalling can add time to your jobs and create stress. But we've built a unique anti-stalling feature on the C30R-3 into the hydrostatic transmission system. Smart automatic hydraulic pressure adjustments allow the machine to turn 360° smoothly without stalling the engine. When it's empty, it can do that in under 10 seconds (18 when full). That all adds up to better manoeuvrability, more-comfortable driving and increased productivity.



**MAANKATTAVA  
HUOLTOVERKOSTO**



**SUORAAN VARASTOSTA  
VARAOSAT**



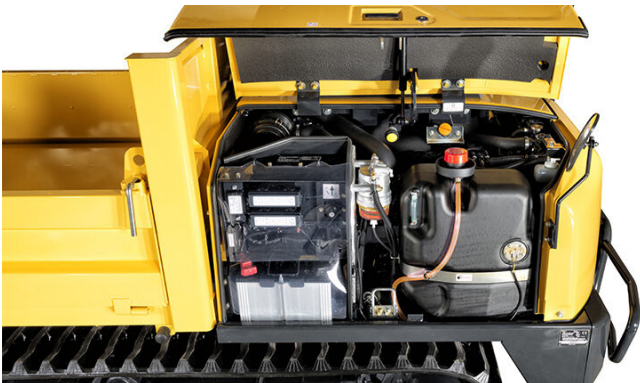
**PALVELEVA  
KENTTÄHUOLTO**



**TOIMIVA  
TEKNINEN TUKI**



# Features



## YANMAR ENGINE WITH DPF

The C30R-3's engine is the result of our drive to continually improve the environment and cut fuel costs. We've radically cut nitrogen oxides through exhaust gas recirculation and cleaned up exhaust emissions with a diesel particulate filter. We've also reduced fuel consumption with an auto-deceleration system that switches the engine back to idle if you don't touch the operating levers for four seconds. And an eco-mode controls the engine speed to allow very low fuel consumption.



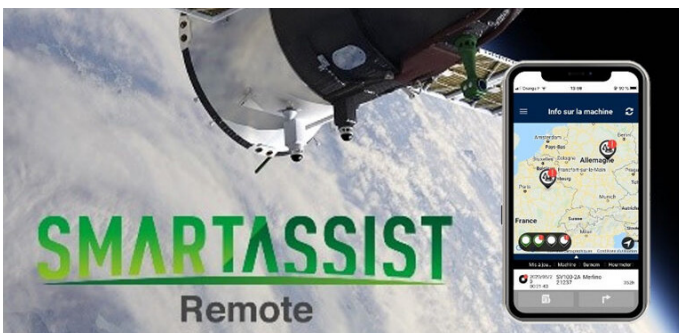
## EASE OF USE

This is a user-centred design that uses a proportional control system to move the machine only as far as the joystick lever is pushed. Let go and it stops. Control your speed by moving the left joystick and control operation with the right joystick. Switch between low-speed and high-speed easily with the automatic dual-speed switch, select forward, reverse, right and left travel. Use the lock switch to prevent accidental operation and make fine speed adjustments with the second accelerator.



## REVERSIBLE SEAT CONSOLE

If you can always see where you're going, your safety improves dramatically. That's why we fitted an operator's seat and travel levers that allow you to turn 180°, so you're always facing forwards. This also increases your visibility and reduces the risk of costly on-site damage.



## SMARTASSIST REMOTE

SmartAssist Remote remotely monitors your machinery over the internet. It quickly detects problems and notifies us of maintenance timings. So we can offer you quality support and service and help you maximise your work potential. With real-time information, you get total control and the ability to monitor and manage your machines remotely over a PC or smartphone.



**MAANKATTAVA  
HUOLTOVERKOSTO**



**SUORAAN VARASTOSTA  
VARAOSAT**



**PALVELEVA  
KENTTÄHUOLTO**



**TOIMIVA  
TEKNINEN TUKI**